

inline Current Source Intensity Control Power Option



shown with the DL072

- 4i) Current regulation and intensity control **built into the power cable**
- 4i) Manual potentiometer intensity control ~15 - 100%

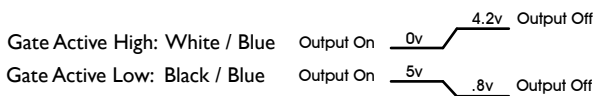
Aii's inline current source (iCS) provides optimum current drive to a light head assembly, replacing external current driver units. Intensity control between ~15 - 100% is accessible through a small opening, via a manual potentiometer located opposite the power indicator LED. A small Phillips or chisel head screw driver is required.

A green LED power indicator, located near the input side of the iCS, lights when power is applied to the brown and blue flying lead wires.

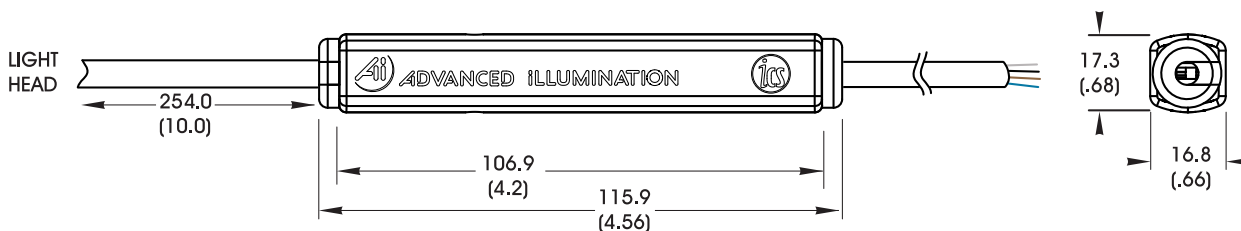
A DC gate control input is available allowing users to enable/disable the iCS output, thereby turning the light on and off. The gating function is not intended as a replacement for high-speed or timing-critical strobe operations.

The iCS unit employs reverse input polarity protection.

Wire Color Code: Input power: Brown + / Blue -



Dimensional Information



The iCS is not detachable. Standard location is 10" from the light head; if necessary, a different cable length and / or iCS location can be specified when ordering. Standard cable length (including iCS) is 1.5M (59")

DIMENSIONS ARE IN MILLIMETERS (INCHES)

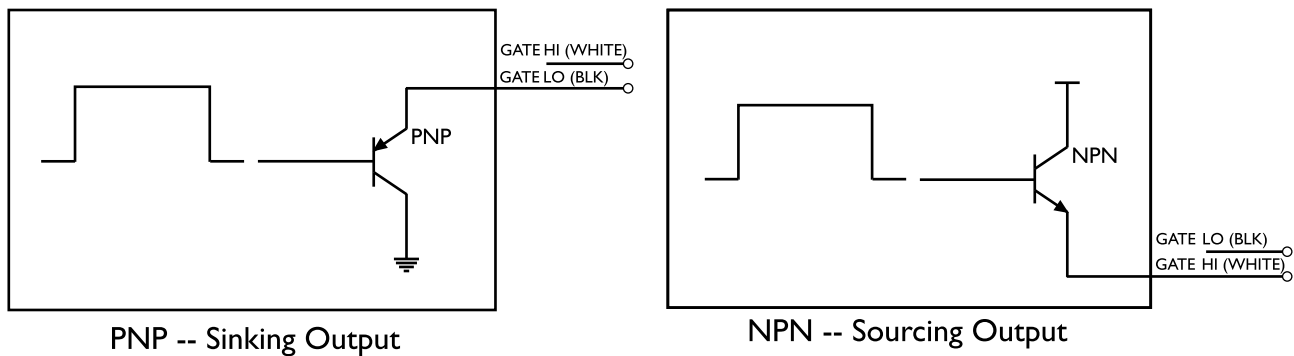
ICS SPECIFICATIONS

Parameter	Specification
Input Voltage Range	+18 to 35 volts dc (24V nom)
Maximum Input Current	1.6 A
Gating Control Active High (GHI) and Active Low (GLO)	GHI Turn On Voltage = 4.2v / Input Tolerant to -10 to +24 vdc GLO Turn On voltage = .8v / Input Tolerant to -21.5 to +24 vdc
Gating Time	Less than 10ms
Power Indicator	Green LED is used to indicate power is being supplied
Storage Temperature	-40 to +125C
Operating Temperature	0 to +70C
Housing Material	High Impact Polycarbonate
Weight	Approx 1.7 oz (cable not included)
Size	Approx 4.55L x 0.67W x 0.70H (in.)

ICS PINOUT

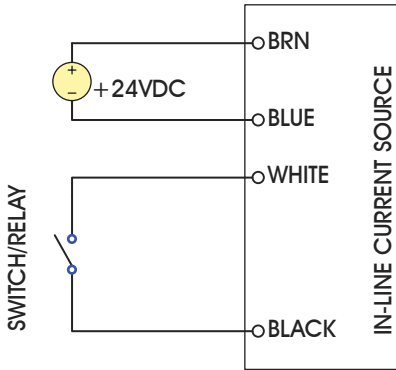
BROWN	VIN +
BLUE	VIN -
WHITE	GHI (Gate HIGH)
BLACK	GLO (Gate LOW)

ICS CONNECTION DIAGRAM



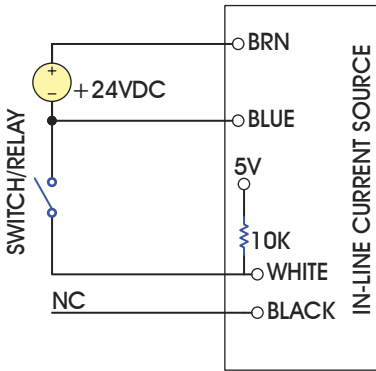
SIMPLE SWITCH

GATE USING WHITE & BLACK



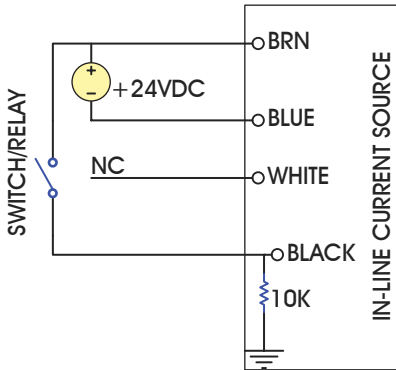
SWITCH CLOSED: LIGHT IS OFF
SWITCH OPENED: LIGHT IS ON

GATE USING WHITE ONLY



SWITCH CLOSED: LIGHT IS OFF
SWITCH OPENED: LIGHT IS ON

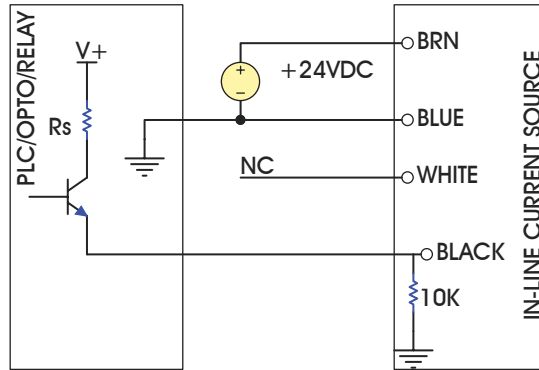
GATE USING BLACK ONLY



SWITCH CLOSED: LIGHT IS OFF
SWITCH OPENED: LIGHT IS ON

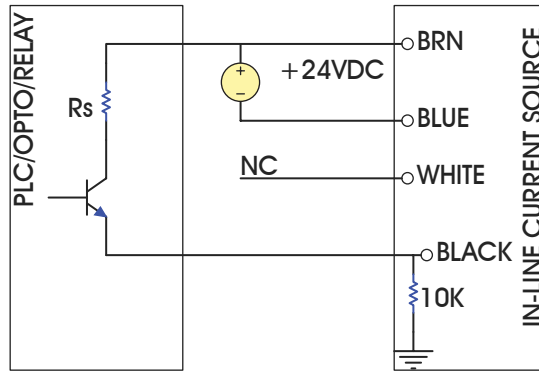
SOURCING OUTPUT

NPN SOURCING



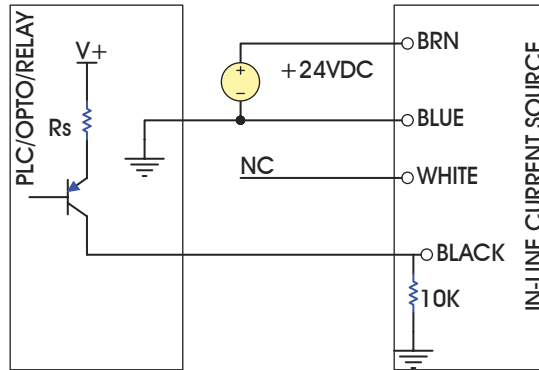
SWITCH ACTIVE: LIGHT IS OFF
SWITCH NOT ACTIVE: LIGHT IS ON

NPN SOURCING-- COMMON (V+)



SWITCH ACTIVE: LIGHT IS OFF
SWITCH NOT ACTIVE: LIGHT IS ON

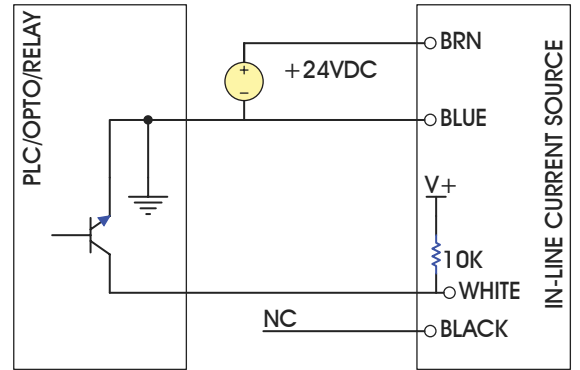
PNP SOURCING



SWITCH ACTIVE: LIGHT IS ON
SWITCH NOT ACTIVE: LIGHT IS OFF

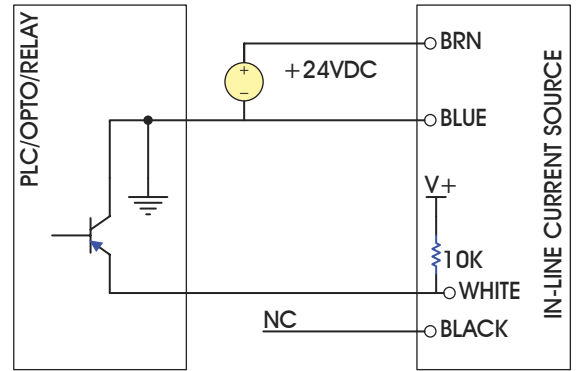
SINKING OUTPUT

NPN SINKING



SWITCH ACTIVE: LIGHT IS OFF
SWITCH NOT ACTIVE: LIGHT IS ON

PNP SINKING



SWITCH ACTIVE: LIGHT IS ON
SWITCH NOT ACTIVE: LIGHT IS OFF