

# PULSAR 320

## High Output Strobe Controller



- Aii** Compact, high power pulse (strobe only) current source
- Aii** Controlled locally w/PC and USB2, or remotely w/built-in Ethernet interface.
- Aii** 50A per output; 100A total output

### Ordering Information

Standard Product:  
Shipped Next Day

**S320**

#### Input Power:

12-36 VDC (24V nominal @ 4 Amps Continuous) (brown-out protected)

#### Output:

50A per output, 100A total output  
100VDC per output  
(48VDC available by request)

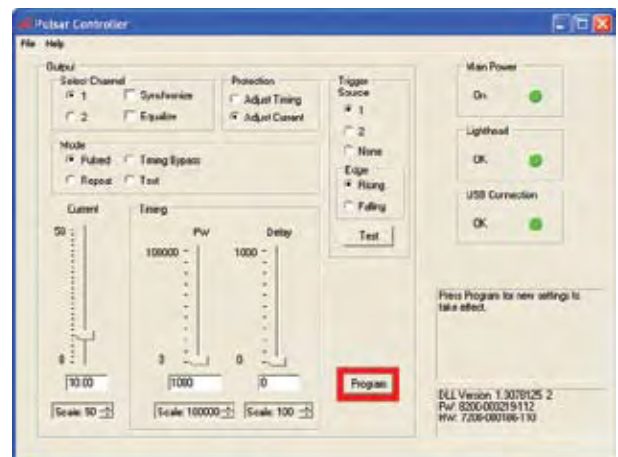
**Max Repetition Rate:\***  
400 Hz

\* Light head dependent

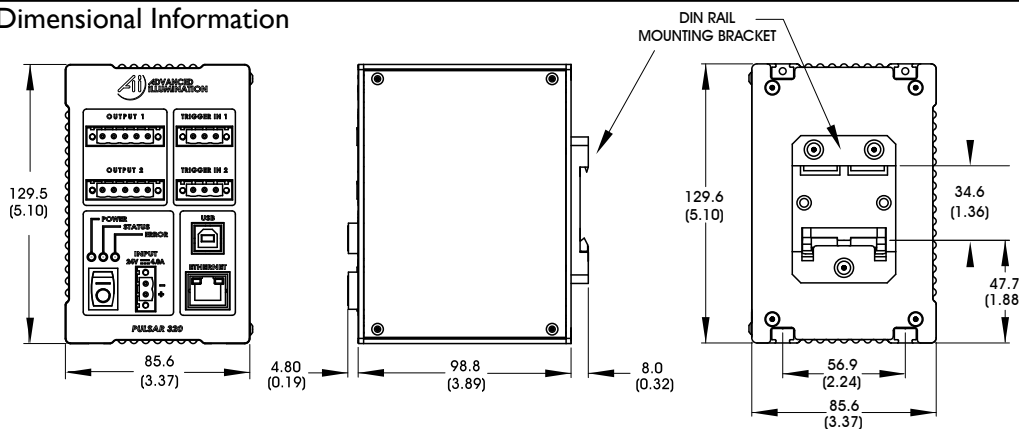
\*\* Current and timing dependent

### Signatech Controller Software

Signatech software enables the user to program all strobe controller current and timing parameters. Currents are programmable for each of 2 outputs, and expressed in amps from 0-50. Timing parameters include pulse width, and post event delay time. All timing parameters are programmed in steps of 1 microsecond, up to a maximum of 100,000.



### Dimensional Information



[Click for Installation Models & Drawings](#)

Included in the package:

- Installation CD
- 3-Pin, Trigger input connectors (2)
- 2-Pin, Power input connectors
- USB Cable

### Additional Information



Lights for use with the Pulsar 320 need to be ordered with C5 connector

### Standard Product Information

Weight:	741.2 g (1.63 lbs)
Finish:	Black Anodized
Operating Temperature:	0-55 C
Meets Specifications:	CE, RoHS