

CB0404

4" x 4" Collimated Surface Mount LED Back Light

- Aii** Greatly improves edge detection for curved surfaces
- Aii** Integrated M6 nut channel for mounting (hardware included)



Ordering Information

Standard Product:
Shipped Next Day

CB0404-WHIIC

Configured with inline
Current Source

Standard Product Variation:

Red & White: Shipped Within Two Weeks

Blue & Infra-red: 4 Weeks **Green:** 6 Weeks

CB0404	-	XXX	XX	XXX
		Spectral wavelength	Optional power Compatibility	Alternative Connector
		(blue) 470 †	IC	M12* male
		(green) 520 †	IS	
		(red) 660 ⊖	C2	
		(infra-red) 880 ⊖	C3	
		(white) WHI †	C5	
			24	

IC = iCS (requires 24v power supply)

IS = ISU (requires 24v power supply)

C2 = Ai Connector

C3 = Pulsar 710 Connector

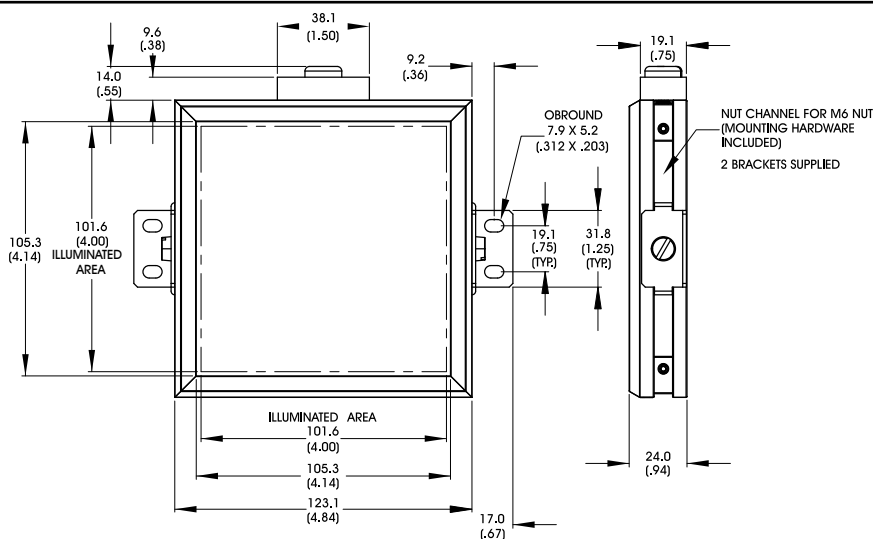
C5 = Pulsar 320 Connector

* Available with IC, IS, and 24v options only

† Not available in 12v

⊖ IS option not available

Dimensional Information



Standard Variation Current Specifications

	blue	green	red	infra-red	white	
@12	N/A	N/A	960	960	N/A	mA
@24/Ai	320	320	480	480	320	mA

Standard Product Information

Product Lifetime: 50,000 hours

Operating Temperature: 0-60° C